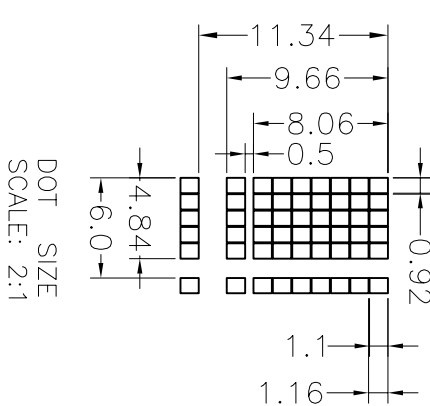
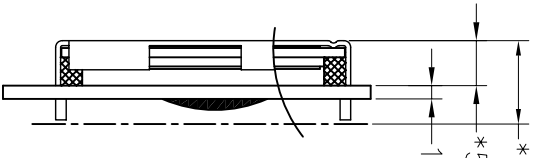
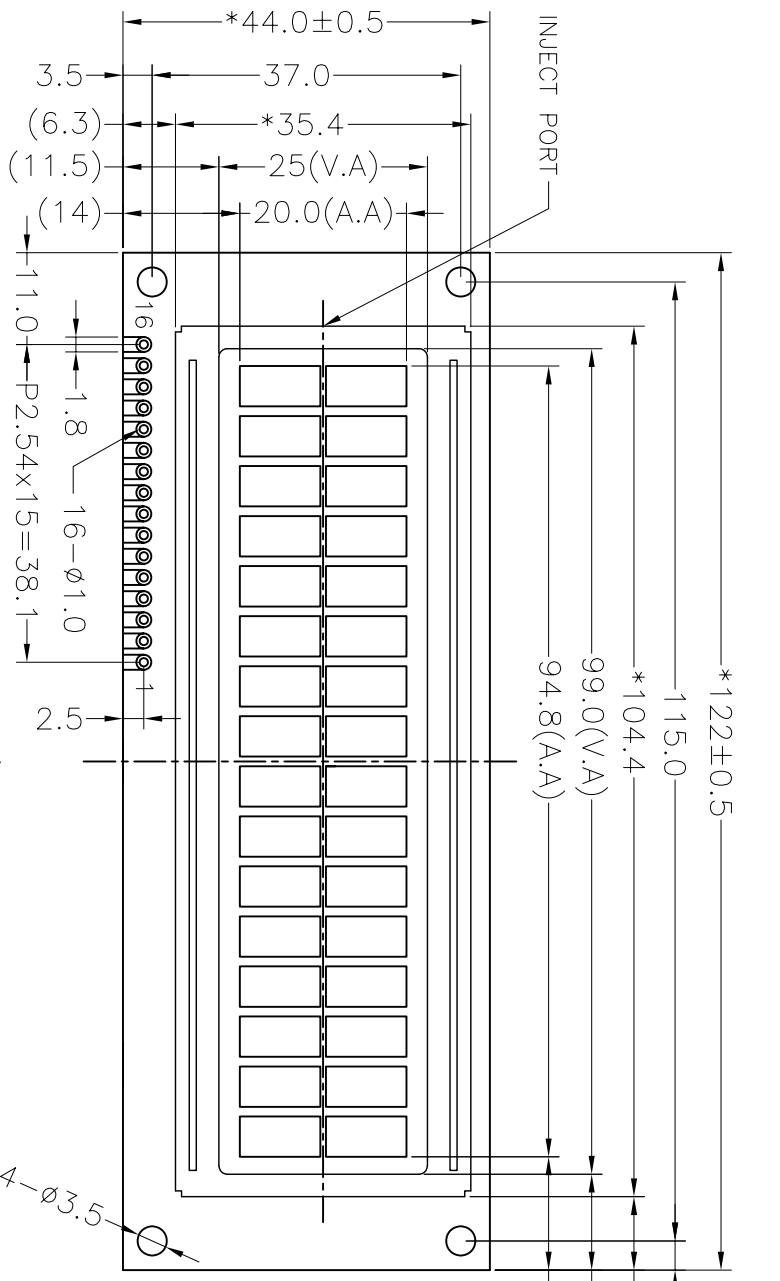


REV 版本	DESCRIPTION 描述	DATE 日期
A	First issue	Feb-28-2008




VIEWING DIRECTION





- Specification:
- 1). Driving: Duty:1/16, Bias:1/5, Vdd:5.0V, Vlcd:4.5V
 - 2). Viewing direction: 6 O'clock
 - 3). Display mode: STN/Positive/Reflective/Y-G
 - 4). Operating temp.: -20°C~+70°C
 - 5). Storage temp.: -30°C~+80°C
 - 6). Drive IC: SPLC780D-001B-C(Or Compatible)
 - 7). Backlight: None
 - 8). Dimensions with mark "*" are important, with mark "(") are referenced
 - 9). All the raw materials are RoHS compliant

PIN	1	2	3	4	5	6	7	8
CONNECTOR	NC	NC	VSS	VDD	VO	RS	R/W	E
PIN	9	10	11	12	13	14	15	16
CONNECTOR	DB0	DB1	DB2	DB3	DB4	DB5	DB6	DB7



深圳秋田微电子有限公司
SHENZHEN AV-DISPLAY CO.,LTD.

PART NO: 零件编号	C/D 结构图	PROJECTION 三角法	MODEL NUMBER 模组型号	SCALE 比例	FTT 适应图面
ABC016002C36-YGN-R			ABC016002C36-YGN-R	SHEET: 页次	1 OF 1
				GENERAL TOL: 公差	±0.3
		DO NOT SCALE THIS DRAWING.		APP: 签字	DATE
				CHK: 签字	
				DWN: 签字	