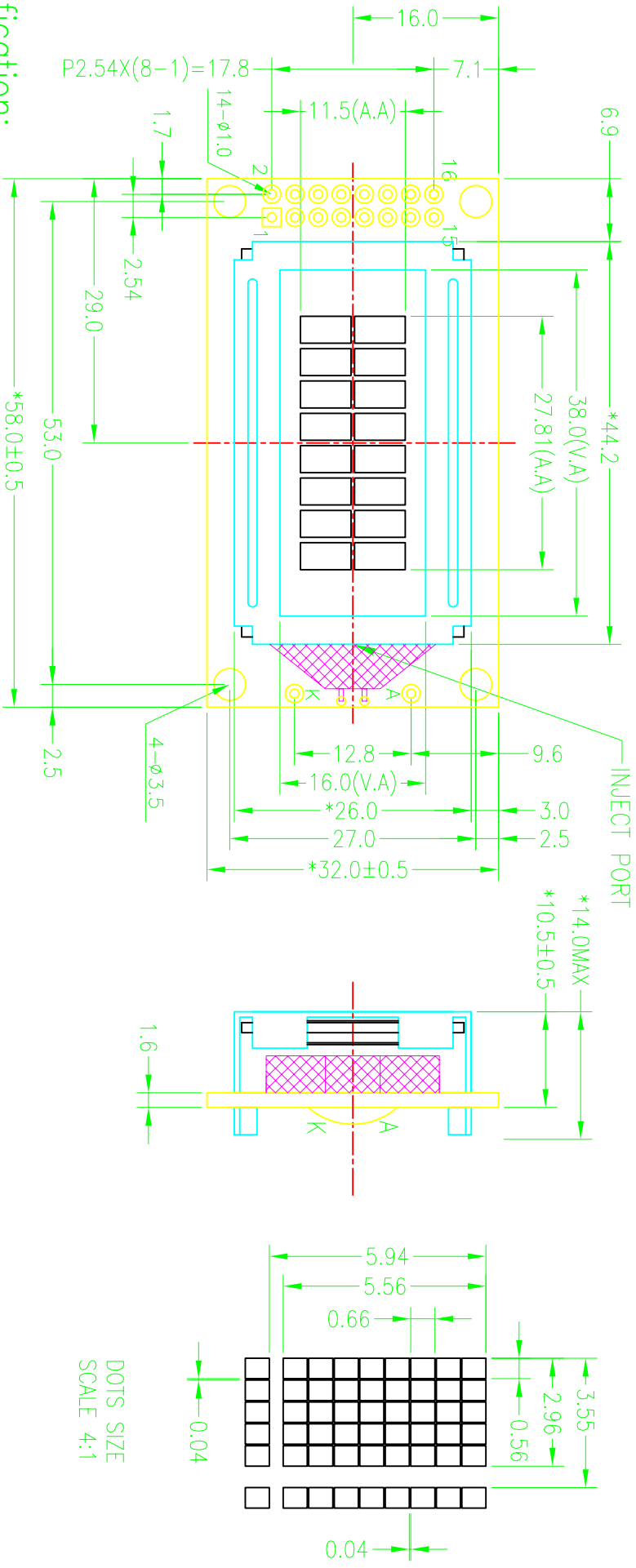


REV 版本	DESCRIPTION 描述	DATE 日期
A	Change Model AMC0802BR-B-B12WTDW-SP03-S1	JAN-24-2008

VIEWING DIRECTION  
↙




Specification:


- 1). Driving: Duty:1/16, Bias:1/5, VLCD:5.0V, VDD:5.0V
- 2). Viewing angle: 12 O'clock
- 3). Display mode:STN/Negative/Transmissive/Blue
- 4). Operating temp.: -20°C~+70°C  
Storage temp.: -30°C~+80°C
- 5). IC: SPLC780D-003A-C (Or Compatible)
- 6). Backlight: Edge White
- 7). Dimensions with mark "\*" are important, with mark "()" are referenced
- 8). All the raw materials are RoHS compliant

PIN	1	2	3	4	5	6	7	8
CONNECTION	VSS	VDD	V0	RS	R/W	E	DB0	DB1
PIN	9	10	11	12	13	14	15	16
CONNECTION	DB2	DB3	DB4	DB5	DB6	DB7	LEDA	LEDK

DOTS SIZE  
SCALE 4:1



**深圳秋田微电子有限公司**  
SHENZHEN AV-DISPLAY CO.,LTD.

PART NO: 零件编号	C/D结构图	PROJECTION 三角法	MODEL NUMBER 模组型号	SCALE 比例	FTT 适应图面
ABC008002D00-BIW-R		ABC080802D00-BIW-R	APP:	SHEET: 页次	1 OF 1
GENERAL TOL: ±0.3			APPROVALS 签字	UNIT 单位	DATE
DO NOT SCALE THIS DRAWING.			CHK:	DWN:	