
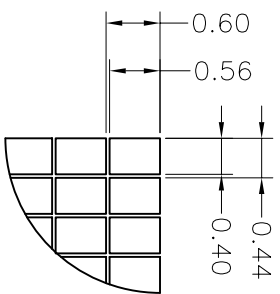
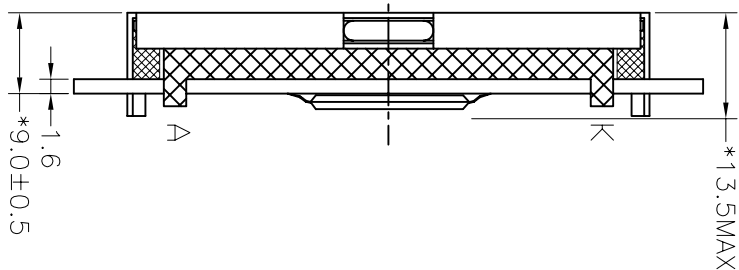
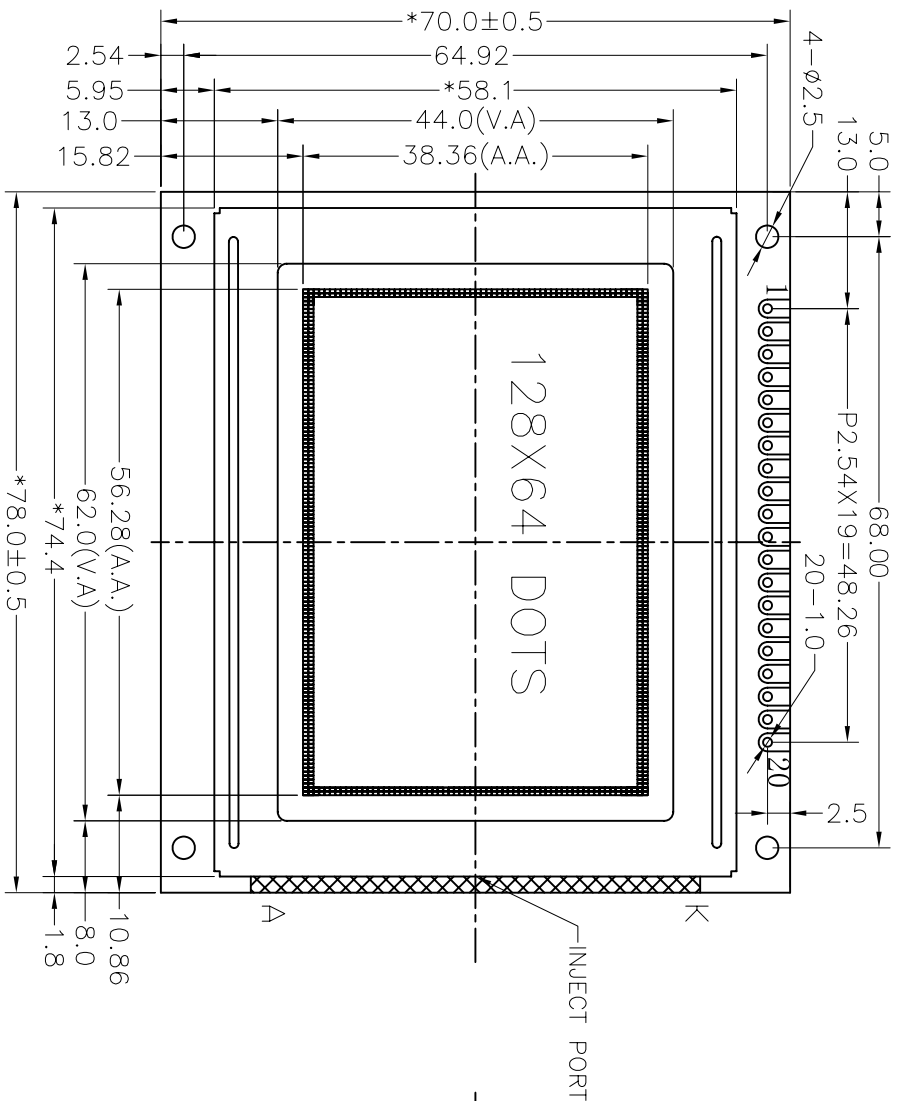


REV 版本	DESCRIPTION 描述	DATE 日期
A	First issue	Feb-27-2007
B	Change LOGO 	JAN-07-2008




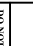
Specification:

- 1). Driving: Duty:1/64 Bias:1/9, VLCD:13.0V(Ref.), VDD:5.0V
- 2). Viewing Direction: 6 O'clock
- 3). Display mode:FSTN/Positive/Transflective
- 4). Operating temp.: -20°C~+70°C
Storage temp.: -30°C~+80°C
- 5). IC: T6963C(or compatible)
- 6). Backlight: Edge, White
- 7). Dimensions with mark "*" are important, with mark "(") are referenced
- 8). All the raw materials are RoHS compliant.

PIN	1	2	3	4	5	6	7	8	9	10
CONNECTION	VEE	VSS	VDD	V0	/MR	/RD	/CE	/CD	/RST	DB0
PIN	11	12	13	14	15	16	17	18	19	20
CONNECTION	DB1	DB2	DB3	DB4	DB5	DB6	DB7	FS	LEDA	LEDK



深圳秋田微电子有限公司
SHENZHEN AV-DISPLAY CO.,LTD.

PART NO: 零件编号	C/D结构图	PROJECTION 三角法	MODEL NUMBER 模组型号	SCALE 比例	FTT 适应图面
ABG128064F03-FHW-R			ABG128064F03-FHW-R	SHEET: 页次	1 OF 1
				GENERAL TOL: 公差	±0.3
				UNIT 单位	mm
				DATE 日期	
				APP: 签字	
				CHK: 签字	
				DWN: 日期	